



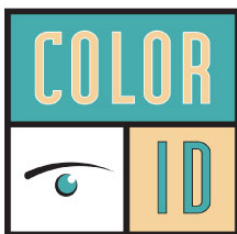
---

# Datacard<sup>®</sup> 280P Card Personalization System

*ID Works Plug-In User's Guide*

September 2014

Part No. 527610-001, Rev. A



888.682.6567

SUPPORT@COLORID.COM

COLORID.COM

## Notice

Please do not attempt to operate or repair this equipment without adequate training. Any use, operation or repair you perform that is not in accordance with the information contained in this documentation is at your own risk.

These products conform to regulatory requirements as specified in North America, Europe, and Asia. Refer to “Revision Log” on page vii for more information.

## Trademark Acknowledgments

Datacard is a registered trademark and service mark of DataCard Corporation in the United States and other countries.

MasterCard is a registered trademark of MasterCard International Incorporated.

Visa is a registered trademark of Visa International Service Association.

All other product names are the property of their respective owners.

## Proprietary Notice

The design and information contained in these materials are protected by US and international copyright laws.

All drawings and information herein are the property of DataCard Corporation. All unauthorized use and reproduction is prohibited.

### **Datacard Group**

11111 Bren Road West  
Minnetonka, MN 55343-9015  
Phone: 952-933-1223  
Fax: 952-933-7971  
[www.datacard.com](http://www.datacard.com)

Copyright © 2014 DataCard Corporation. All rights reserved.

# Compliance Statements

## Liability

The WARNING and CAUTION labels have been placed on the equipment for your safety. Please do not attempt to operate or repair this equipment without adequate training. Any use, operation, or repair in contravention of this document is at your own risk.

## Safety

All Datacard® products are built to strict safety specifications in accordance with CSA/UL60950-1 requirements and the Low Voltage Directive 2006/95/EC.

Therefore, safety issues pertaining to operation and repair of **Datacard®** equipment are primarily environmental and human interface.

The following basic safety tips are given to ensure safe installation, operation, and maintenance of **Datacard** equipment.

- Connect equipment to a grounded power source. Do not defeat or bypass the ground lead.
- Place the equipment on a stable surface (table) and ensure floors in the work area are dry and non-slip.
- Know the location of equipment branch circuit interrupters or circuit breakers and how to turn them on and off in case of emergency.
- Know the location of fire extinguishers and how to use them. ABC type extinguishers may be used on electrical fires.
- Know local procedures for first aid and emergency assistance at the customer facility.
- Use adequate lighting at the equipment location.
- Maintain the recommended temperature and humidity range in the equipment area.

## Regulatory Compliance

### Notice for USA (FCC notice)

This equipment has been tested and found to comply with the limits for Class A computing devices, pursuant to Part 15 of FCC rules. These limits are designed to provide reasonable protection against harmful interference when the equipment is operated in a commercial environment. This equipment generates, uses, and can radiate radio frequency energy. If this equipment is not installed and used in accordance with this instruction manual, it may cause harmful interference to radio communications. Operation of this equipment in a residential area is likely to cause harmful interference in which case the user will be required to correct the interference at their own expense. Changes or modifications not expressly approved by the party responsible for compliance could void the user's authority to operate the equipment.

### Notice for Canada

#### **Industry Canada**

This digital apparatus does not exceed the Class A limits for radio noise for digital apparatus set out in the Radio Interference Regulations of the Canadian Department of Communications.

Le présent appareil numérique n'émet pas de bruits radioélectriques dépassant les limites applicables aux appareils numériques de la classe A prescrites dans le Règlement sur le brouillage radioélectrique édicté par le ministère des Communications du Canada.

#### **RSS-Gen, Issue 3, December 2010, Section 7.1.3 User Manual Notice**

This Device complies with Industry Canada License-exempt RSS standard(s). Operation is subject to the following two conditions: 1) this device may not cause interference, and 2) this device must accept any interference, including interference that may cause undesired operation of the device.

Cet appareil est conforme avec Industrie Canada RSS standard exemptes de licence(s). Son fonctionnement est soumis aux deux conditions suivantes: 1) ce dispositif ne peut causer des interférences, et 2) cet appareil doit accepter toute interférence, y compris les interférences qui peuvent causer un mauvais fonctionnement du dispositif.

### Notice for Europe

The EU Declaration of Conformity can be found on **Datacard.com**

We hereby certify that this printer complies with EMC Directive 2004/108/EC, R&TTE Directive 1999/5/EC, and the EU RoHS Directive EU Directive 2011/65/EC. This printer conforms to Class A of EN 55022 and to EN 301 489-5. Operation of this equipment in a residential environment may possibly cause interference. In the event of interference, the users, at their own expense, will be required to take whatever measures are necessary to correct the problem.

## Notice for Europe and Australia

This is a Class A product. In a domestic environment this product may cause radio interference, in which case the user may be required to take adequate measures.

## Notice for China (Simplified Chinese)

### 警告

此为 A 级产品，在生活环境中，该产品可能会造成无线电干扰。在这种情况下，可能需要用户对干扰采取切实可行的措施。

## Notice for Taiwan (Traditional Chinese)

警告使用者：  
這是甲類的資訊產品，在居住的環境中使用時，可能會造成射頻干擾，在這種情況下，使用者會被要求採用某些適當的對策。

## Notice for Japan

### Japanese Voluntary Control Council for Interference (VCCI) class A statement

この装置は、クラス A 情報技術装置です。この装置を家庭環境で使用すると電波妨害を引き起こすことがあります。この場合には使用者が適切な対策を講ずるよう要求されることがあります。 VCCI-A

## Korea Communications Commission (KCC) statement

이 기기는 업무용(A급)으로 전자파적합기기로서 판매자 또는 사용자는 이 점을 주의하시기 바라며, 가정외의 지역에서 사용하는 것을 목적으로 합니다.

## California Proposition 65 Compliance

**WARNING: This product contains chemicals, including lead, known to the State of California to cause cancer, and birth defects or other reproductive harm. *Wash hands after handling.***

Datacard Group believes that its products are not harmful when used as designed. However, the above warning is made in compliance with the State of California Safe Drinking Water and Toxic Enforcement Act of 1986, which requires warning labels on products that may contain elements that the State of California considers harmful.

**Revision Log**  
**Datacard 280P ID Works Plug-In Guide**

<b>Revision</b>	<b>Date</b>	<b>Description of Changes</b>
A	September 2014	First release of this document





# Contents

<b>Chapter 1: Introduction</b> .....	<b>1</b>
What is a Plug-In? .....	1
Assign the Printer Plug-In .....	2
Print Multiple Copies of Cards .....	2
<b>Chapter 2: Design Considerations</b> .....	<b>3</b>
Project Design .....	3
Card Design Properties .....	4
Card Size .....	4
Card Background .....	4
Field to Identify Print Jobs .....	4
Topcoat .....	5
Edge To Edge Printing .....	5
Rotate Print Orientation 180 Degrees .....	5
Portrait Orientation .....	5
Back Side of Card .....	5
Card Fields .....	6
Text and Date Fields .....	6
Static Text Fields .....	7
Bar Code, Signature, Static Graphic, and Variable Graphic Fields .....	7
Photo Fields .....	8
Magnetic Stripe Fields .....	8
Smart Card Fields .....	8
Limitations .....	9
<b>Chapter 3: Magnetic Stripe Encoding</b> .....	<b>11</b>
Design an ID Works Project to Encode Magnetic Stripes .....	11
Create a New Magnetic Stripe Encoder Configuration .....	12
Change a Magnetic Stripe Encoder Configuration .....	14
Delete a Magnetic Stripe Encoder Configuration .....	15
Distribute Encoder Configurations .....	15
Job Tracking .....	16
<b>Chapter 4: Troubleshooting</b> .....	<b>17</b>
Embossing/Indent/Magnetic Stripe Fonts Do Not Appear in the List of Fonts Available for Text Fields .....	17
Users Cannot Print to the 280P System .....	18
I Get "Limits Exceeded" Errors When Printing Cards in ID Works Production .....	20



# Chapter 1: Introduction



This chapter introduces the Datacard® 280P ID Works Plug-in and describes how it works with Datacard® ID Works® Identification Software.

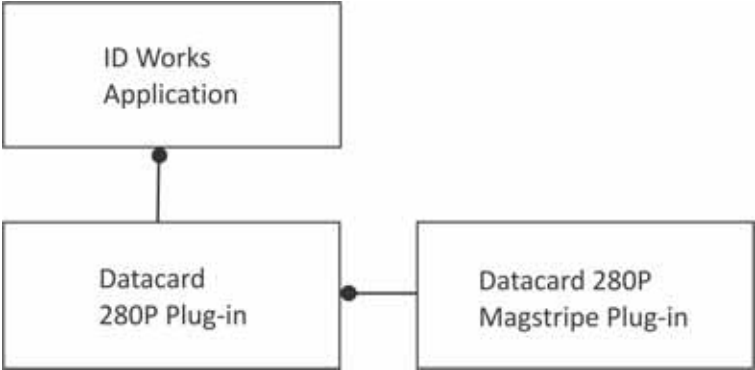
---

ID Works uses the Datacard 280P Plug-in and the 280P Magstripe Plug-in to translate card designs into language the 280P Card Personalization System can understand and use. This *User's Guide* explains the following:

- How ID Works features relate to features in the 280P system
- Which ID Works features cannot be used with the 280P system
- The steps you must take to make sure that ID Works produces the correct results on the 280P system

## What is a Plug-In?

A plug-in is a software module that provides an interface between the main ID Works application and a peripheral device (such as a card printer), or between the peripheral device and a component within the device (such as an encoder for magnetic stripes). The Datacard 280P Plug-in connects to the ID Works application, and the Datacard 280P Magstripe Plug-in connects to the printer plug-in.



You can create and save multiple configurations for the Card Personalization System. A configuration is a group of settings tailored to the way you use the device. For each configuration, you can specify certain options to best meet your needs.

The 280P plug-in provides the following features:

- Supports the ID Works magnetic stripe field so there is no need for magnetic stripe fonts.
- Allows you to control topping for embossed text through the ID Works card design.
- Makes card completion status available for Software Development Kit users.
- Allows you to personalize smart cards.
- Supports embossing and indenting using special TrueType fonts.

## Assign the Printer Plug-In

You specify associations between the printer plug-in and installed printers.

If the 280P card printer driver is installed on the computer before the ID Works software is installed, the plug-in installation automatically assigns the printer to use the plug-in. If the printer is installed after the plug-in, use the Assign Printer Plug-in utility in the ID Works Administrator application to assign the plug-in to the printer. See the online help topic “Assign printer plug-ins” for step-by-step instructions. You must assign the printer plug-in on each computer that prints cards with ID Works.

## Print Multiple Copies of Cards

When a Production operator specifies that two or more copies of a card be printed, the 280P plug-in creates a separate print job for each copy. If the multiple copy request includes using card completion status (a Software Development Kit feature), the plug-in displays an error message and stops the job. To print multiple copies of a card with card completion status, submit multiple requests, each with the card quantity set to 1.



# Chapter 2: Design Considerations

# 2

This chapter describes what you need to be aware of as you design a card in ID Works to print on the 280P printer.

---

## Project Design

ID Works Designer includes some features that cannot be used with the 280P Card Personalization System. For example, the Designer application does not know the type of output device you plan to use, so it cannot provide feedback at design time that you are using a feature that your system does not support. In addition, the options installed in your printer affect which ID Works features you can use.

The 280P Card Personalization System has features that are unique to the printer and require special procedures in ID Works.

This chapter explains which ID Works features you should avoid in your card designs, and how to implement special Card Personalization System features in your ID Works projects.



We recommend that you print sample cards from the Designer application to your 280P system to make sure that your card design works properly in ID Works Production.

# Card Design Properties

You change properties of the overall card design using the Edit Card Design Properties dialog box. (See the Designer online help topic, “Access the Edit Card Design Properties dialog box”.)



ID Works does not use the printing preferences specified in the printer driver. You must use ID Works to set up options, such as layout and topcoat.

## Card Size

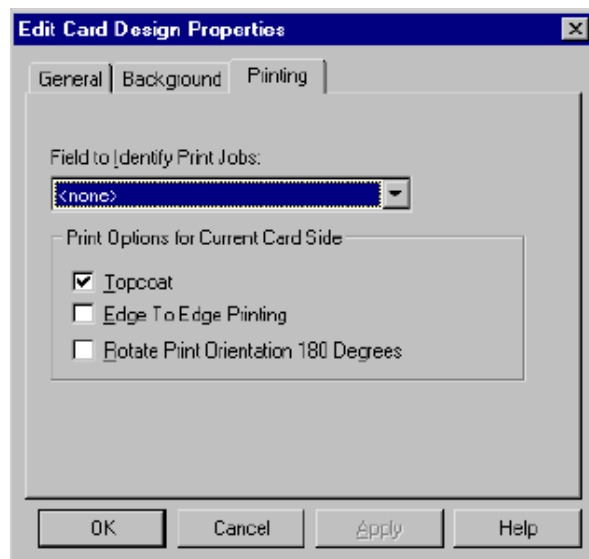
The only card size supported by the Datacard 280P Plug-in is CR80.

## Card Background

Do not use a colored card background when printing to the 280P system. You can use single-color graphics if the UltraGrafix module is part of your system.

## Field to Identify Print Jobs

Because the 280P plug-in bypasses the Windows print spooler, any field selected as the Field to Identify Print Jobs is ignored.



Refer to “Job Tracking” on [page 16](#) for more information.

## Topcoat

The Topcoat setting on the Printing tab of the Edit Card Design Properties dialog box indicates that all embossed text will have topping foil applied if the system includes the topper module. Topping makes embossed text easier to read.

Because embossed text must be on the front side of the card, the Topcoat setting for the back side of the card is ignored.

## Edge To Edge Printing

Do not use edge-to-edge printing on the 280P system, either by supplying a background graphic that covers the entire card or by placing fields closer than 0.2 inch (5 mm) from any edge of the card.

## Rotate Print Orientation 180 Degrees

Because the emboss and indent fonts can operate in only one orientation, this selection is not supported. If your 280P system includes the UltraGrafix option, you can rotate graphics fields and text fields that use TrueType or OpenType fonts on a field-by-field basis.

## Portrait Orientation

Because the emboss and indent fonts can operate only in landscape orientation, this selection is not supported. If your 280P system includes the UltraGrafix option, you can rotate graphics fields and text fields that use TrueType or OpenType fonts on a field-by-field basis to achieve a portrait effect.

## Back Side of Card

Only the following types of fields are allowed on the back side of a card:

- **Magnetic Stripe**—Used with the 280P Magstripe Plug-in to encode magnetic stripes. The 280P system does not need to have magnetic stripe fonts installed.
- **Text**—Specifies an indent font installed in the system.



For convenience in positioning a text field using an indent font, you can place a Non-Printable Area on the back side of a card and then position the text field on top of the non-printing area.

Refer to the Designer online help topic, “Create a two-sided card” for more information.

# Card Fields

You can change the properties of the individual fields on the card design using the Edit Field Properties dialog box. (Refer to the Designer online help topic, “Access the Edit Field Properties dialog box”.)

## Text and Date Fields

If your 280P system includes the UltraGrafix option, you can specify TrueType or OpenType fonts for text and date fields. They behave as described in the ID Works *Administrator’s Guide*, with the following exceptions:

- The **Topcoat** setting is ignored. Refer to “[Topcoat](#)” on [page 5](#).
- We recommend that you use the default values for **Foreground Color** and **Background Color**.
- The **Use K-Panel if available** setting is ignored.

If your system includes embossing and indenting options, you can use special fonts for text and date fields, with the following limitations:

- Use only the TrueType fonts with the name IDW\_xxx for embossing and indenting. The following fonts are installed with the plug-in and available to use with the printer:

### IDW-xxx Fonts:

- |                                 |                                  |
|---------------------------------|----------------------------------|
| – IDW_Emboss-6mm Gothic 7cpi    | – IDW_Indent-OCR B1 10cpi        |
| – IDW_Emboss-Farrington 7B 7cpi | – IDW_Indent-ElectronOCR B4 7cpi |
| – IDW_Emboss-Hospital 7B 7cpi   | – IDW_Emboss-OCR B4 7cpi         |
| – IDW_Emboss-HospitalElite 9cpi | – IDW_Indent-OCR B4 7cpi         |
| – IDW_Emboss-Large Gothic 7cpi  | – IDW_Emboss-Std Gothic 10cpi    |
| – IDW_Indent-MasterCard 14cpi   | – IDW_Emboss-Std Gothic Cyrillic |
| – IDW_Indent-OCR A1 10cpi       |                                  |

- Use embossing fonts only on the front side of the card.
- Use indent fonts only on the back side of the card.
- The **Alignment** setting is ignored. All text is left-justified.
- The **Rotation**, **Topcoat**, **Automatically Adjust Font Size**, and **Foreground** and **Background** color settings are ignored.



## Static Text Fields

If your 280P system includes the UltraGrafix option, you can specify TrueType or OpenType fonts for static text fields. They behave as described in the ID Works *Administrator's Guide*, with the following exceptions:

- The **Topcoat** setting is ignored. Refer to “[Topcoat](#)” on [page 5](#).
- We recommend that you use the default values for **Foreground Color** and **Background Color**.
- The **Use K-Panel if available** setting is ignored.

If your system includes embossing and indenting options, you can use the IDW\_xxx fonts (refer to “[IDW-xxx Fonts:](#)” on [page 6](#)) for static text fields, with the following limitations:

- Use embossing fonts only on the front side of the card.
- Use indent fonts only on the back side of the card.
- The **Alignment** setting is ignored. All text is left-justified.
- **Word Wrap** is ignored. A static text field that uses an embossing or indent font can be only one line. Use multiple static text fields for multiple lines of text.
- The **Rotation**, **Topcoat**, **Automatically Adjust Font Size**, and **Foreground** and **Background** color settings are ignored.

## Bar Code, Signature, Static Graphic, and Variable Graphic Fields

If your 280P system includes the UltraGrafix option, these fields behave as described in the ID Works *Administrator's Guide*, with the following exceptions:

- The field must be on the front side of the card design.
- The **Topcoat** setting is ignored. Refer to “[Topcoat](#)” on [page 5](#).
- **Background Color** for a bar code field is not supported.
- If you use Interpretation Text options for a bar code field, you must select an OpenType or TrueType font for the text.

## Photo Fields

If your 280P system includes the UltraGrafix option, photo fields behave as described in the *ID Works Administrator's Guide*, with the following exceptions:

- The field must be on the front side of the card design.
- The **Topcoat** setting is ignored. Refer to “[Topcoat](#)” on [page 5](#).
- We recommend that any border used be black.
- Ghosted photos are not supported.
- We recommend that you do not use the Configure K-Panel Printing utility in the ID Works Administrator application with the 280P. The 280P Plug-in automatically optimizes graphics for printing with a one-color ribbon.

## Magnetic Stripe Fields

If your 280P system includes the magnetic stripe option, the ID Works magnetic stripe fields behave as described in the *ID Works Administrator's Guide*, except that the field must be on the back side of the card design.

Refer to [Chapter 3: "Magnetic Stripe Encoding"](#) for complete information.

## Smart Card Fields

If your 280P system includes a smart card module and a smart card encoder plug-in is installed on your computer, smart card fields behave as described in the *ID Works Administrator's Guide*, except that the field must be on the front side of the card design.

Refer to the documentation for the encoder plug-in installed on your system for more information.

# Limitations

- **Embossing/Indent Limitation**

You can use up to 11 fields that, combined, use embossing fonts and indent fonts.

- **Graphic Size Limitation**

When the 280P Plug-in prepares data for a 280P system with the UltraGrafix option, it combines all the information to be printed with the UltraGrafix option into a composite graphics file. The composite file includes background graphics, static graphics, variable graphics, bar codes, signatures, photos, and text and date fields that use TrueType or OpenType fonts.

The composite graphics file that is sent to the 280P system must be 60 KB or less. Graphics files that are too large produce an error at print time. The only way to tell whether the composite graphics file is under the size limit is to print sample cards from the Designer application. Refer to the Designer online help topic, "Print a sample card".

If your card design contains variable graphics or a photo field, print samples from the Production application using a variety of photos and all possible graphic elements. If any of the sample cards produce an error message, consider simplifying your card design.



# Chapter 3: Magnetic Stripe Encoding

# 3

This chapter describes how to use the 280P Magstripe Plug-in to encode magnetic stripe data on your cards.

---

## Design an ID Works Project to Encode Magnetic Stripes

Do the following to design an ID Works project that includes magnetic stripe encoding:

1. On your Production Form, insert a field for each magnetic stripe track you want to encode. To combine information from two or more fields on a track, create a composite field. See the Designer online help topic “Add a composite field to a Production Form” for step-by-step instructions.

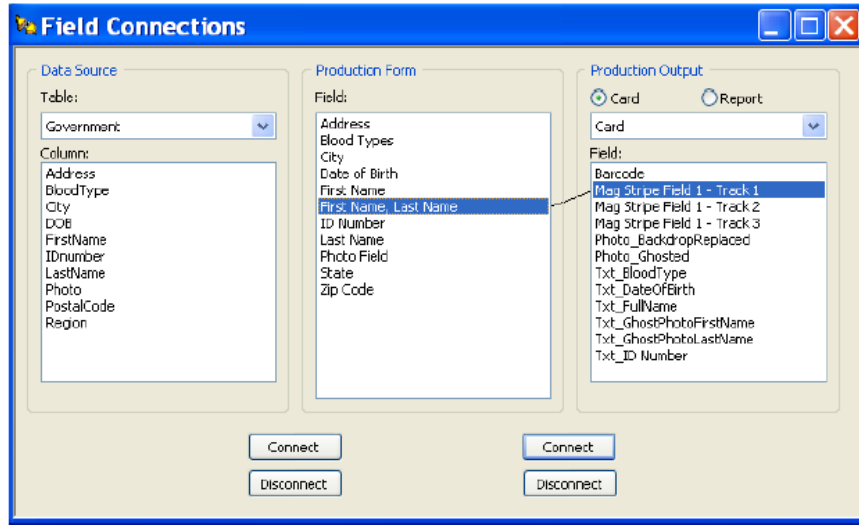


The 280P Magstripe Plug-in adds the necessary start sentinels before sending data to the encoding module.

Consider using masks on the text fields connected to magnetic stripe tracks to ensure that only valid characters are entered. See “Text Field Masks” in chapter 3 of the ID Works *Administrator’s Guide*.

2. In your card design, insert a magnetic stripe field on the back side of your card. See the Designer online help topic “Add a magnetic stripe field to a card” for step-by-step instructions.
3. Double-click the magnetic stripe field. The Edit Field Properties [Magnetic Stripe] dialog box opens.
4. On the Encoding tab, select **Datacard 275/280P/295 Magstripe Plug-in** from the Device list.
5. Select an encoder configuration. Refer to “[Create a New Magnetic Stripe Encoder Configuration](#)” on [page 12](#) or “[Change a Magnetic Stripe Encoder Configuration](#)” on [page 14](#).
6. Click **OK** to close the Edit Field Properties [Magnetic Stripe] dialog box.

- Using the Field Connector, connect Production Form fields to the appropriate tracks in the Production Output area. See the Designer online help topic “Connect fields” for step-by-step instructions.



- Print and encode a test card for your project using the ID Works Production application.



Sample cards printed in the ID Works Designer application are not encoded.

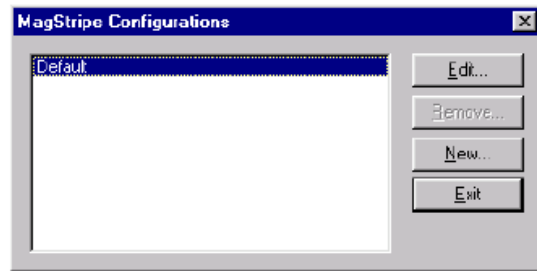
- Verify that the card can be read in a magnetic stripe reader.

## Create a New Magnetic Stripe Encoder Configuration

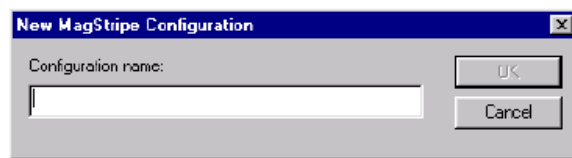
Do the following to create a new encoder configuration:

- Open or create an ID Works project that has a card design with a magnetic stripe field.
- Select the magnetic stripe field and open the Edit Field Properties [Magnetic Stripe] dialog box. See the Designer online help topic “Add a magnetic stripe field to a card” for step-by-step instructions.
- On the Encoding tab of the Edit Field Properties [Magnetic Stripe] dialog box, select **Datacard 275/280P/295 Magstripe Plug-in** from the Device list.

4. Click **Edit Configurations**. The MagStripe Configurations dialog box opens.



5. Click **New**. The New MagStripe Configuration dialog box opens.

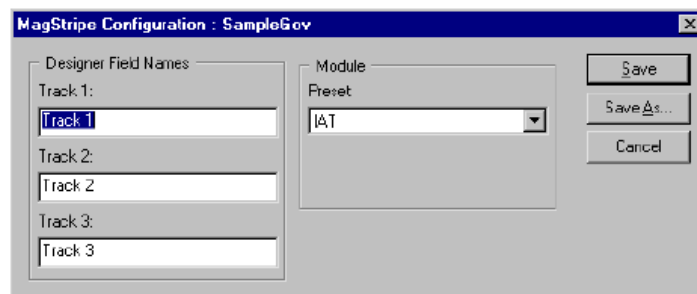


6. Type a name for the magstripe configuration and click **OK**.



It might be helpful to give the configuration the same name as the ID Works projects that will use it.

The MagStripe Configuration : [name] dialog box opens.



7. (Optional) In the Designer Field Names area, change the track names from the default values (Track 1, Track 2, Track 3) to the names of the Production Form fields that supply data for the tracks.



In the Module area, IAT is the only type of encoding available.

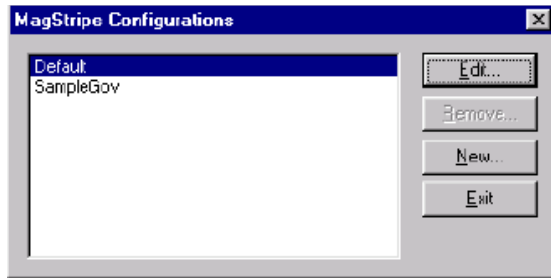
8. Click **Save** to save your changes and close the MagStripe Configuration : [name] dialog box. Then, click **Exit** to close the MagStripe Configurations dialog box.
9. Click **OK** to close the Edit Field Properties [Magnetic Stripe] dialog box.

You also can create a new magnetic stripe encoder configuration by copying an existing configuration. Refer to [“Change a Magnetic Stripe Encoder Configuration”](#) on page 14.

# Change a Magnetic Stripe Encoder Configuration

Do the following to change an encoder configuration:

1. Open or create an ID Works project that has a card design with a magnetic stripe field.
2. Select the magnetic stripe field and open the Edit Field Properties [Magnetic Stripe] dialog box. See the Designer online help topic “Add a magnetic stripe field to a card” for step-by-step instructions.
3. On the Encoding tab of the Edit Field Properties [Magnetic Stripe] dialog box, select **Datacard 275/280P/295 Magstripe Plug-in** from the Device list.
4. Click **Edit Configurations**. The MagStripe Configurations dialog box opens.



5. Select the configuration you want to change and click **Edit**. The MagStripe Configuration : [name] dialog box opens.
6. Make the necessary changes.
7. Click **Save** to save your changes with the current configuration name and close the MagStripe Configuration : [name] dialog box.

– or –

Click **Save As** to save your changes under a new configuration name without changing the original configuration. The Save Configuration as dialog box opens. Enter a configuration name and click **OK**.

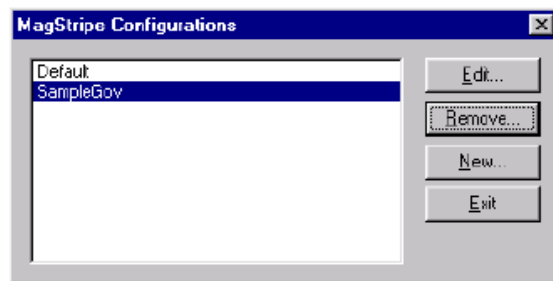
8. Click **Exit** to close the MagStripe Configurations dialog box.
9. Click **OK** to close the Edit Field Properties [Magnetic Stripe] dialog box.



# Delete a Magnetic Stripe Encoder Configuration

Do the following to delete an encoder configuration:

1. Open an ID Works project that has a card design with a magnetic stripe field.
2. Select the magnetic stripe field and open the Edit Field Properties [Magnetic Stripe] dialog box. See the Designer online help topic “Add a magnetic stripe field to a card” for step-by-step instructions.
3. On the Encoding tab of the Edit Field Properties [Magnetic Stripe] dialog box, select **Datacard 275/280P/295 Magstripe Plug-in** from the Device list.
4. Click **Edit Configurations**. The MagStripe Configurations dialog box opens.



5. Select the configuration you want to delete and click **Remove**. A confirmation dialog box opens.
6. Click **Yes** to remove the configuration.
7. Click **Exit** to close the MagStripe Configurations dialog box and then click **OK** to close the Edit Field Properties [Magnetic Stripe] dialog box.

## Distribute Encoder Configurations

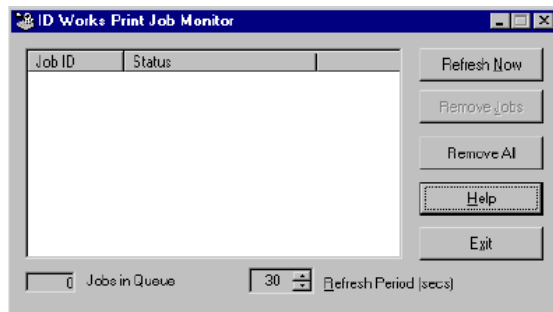
If you want to distribute your ID Works project to other computers in your system, the encoder configurations must be available on those computers. There are two ways to accomplish this:

- Select **Include magnetic stripe configurations** on the Export Projects dialog box when you export the project. See the ID Works Administrator application online help topic “Export a project” for a step-by-step procedure.
- Recreate the encoder configurations on each computer in your system (this requires a copy of ID Works Designer on each computer).

# Job Tracking

Because the Datacard 280P Magstripe Plug-in bypasses the Windows print spooler, the method described in the Production help topic, "Track card printing jobs" does not apply. The ID Works Print Job Monitor, automatically loaded with ID Works, provides an alternate way of tracking jobs through the 280P system.

To begin using the ID Works Print Job Monitor, select **Start/Programs/ Datacard/ID Works/Tools** and then select **Print Monitor**.



Click **Help** to see descriptions of the information provided by the Print Job Monitor and procedures for using it.



# Chapter 4: Troubleshooting

# 4

This chapter provides information to help you identify and resolve some common issues with using the 280P Plug-in.

---

The interaction among the Windows operating system, the ID Works software (including the Datacard plug-in), the 280P driver, and the 280P system is complex. An incorrect setting in any component can result in unexpected results. This section lists some common symptoms and the steps you should take to remedy them.

## Embossing/Indent/Magnetic Stripe Fonts Do Not Appear in the List of Fonts Available for Text Fields

You must use the special IDW\_xxx TrueType fonts that are installed with the 280P Plug-in for embossing and indenting. The following fonts are installed:

- IDW\_Emboss-6mm Gothic 7cpi
- IDW\_Emboss-Farrington 7B 7cpi
- IDW\_Emboss-Hospital 7B 7cpi
- IDW\_Emboss-HospitalElite 9cpi
- IDW\_Emboss-Large Gothic 7cpi
- IDW\_Indent-MasterCard 14cpi
- IDW\_Indent-OCR A1 10cpi
- IDW\_Indent-OCR B1 10cpi
- IDW\_Indent-ElectronOCR B4 7cpi
- IDW\_Emboss-OCR B4 7cpi
- IDW\_Indent-OCR B4 7cpi
- IDW\_Emboss-Std Gothic 10cpi
- IDW\_Emboss-Std Gothic Cyrillic

## Users Cannot Print to the 280P System

The serial communication port that the 280P system uses is locked by the operating system when the printer driver is installed. Only the printer driver has access to the port. Because the ID Works software cannot use the driver, it is prevented from communicating with the 280P system.

You can assign the printer driver to a different port to allow ID Works to communicate with the printer. However, this prevents the driver (and other applications) from communicating with the printer.

If you need to access the 280P system from the ID Works software and from other applications, do the following before you change applications.

### Preliminary Steps

1. Install and test the 280P Card Personalization System and the printer driver. (Refer to the *280P Driver Installation and Technical Reference Manual*.)
2. Install the ID Works software and the Datacard 280P Plug-in.
3. Assign the plug-in to the system using the ID Works Administrator Assign Printer Plug-ins utility. See the Administrator online help topic, "Assign printer plug-ins".
4. Edit the plug-in configuration file and set the COM port and baud rate to match the printer and the driver.



The plug-in uses an .ini file, **2xxPrinterPlugin.INI**, to store the serial COM port and baud rate values. The .ini file is installed with the plug-in and is located in the area used to store other ID Works v6.5 configuration data.

The .ini file has one section and two parameters, set to the following values:

```
[Port]
name=COM1
baudRate=9600
```

- a. Open the plug-in configuration file:  
C:\ProgramData\Datacard\IDSoftware\Configuration\2xxPrinterPlugin.INI
- b. Change the COM port, if necessary.
- c. Set the baudRate to: baudRate=57600

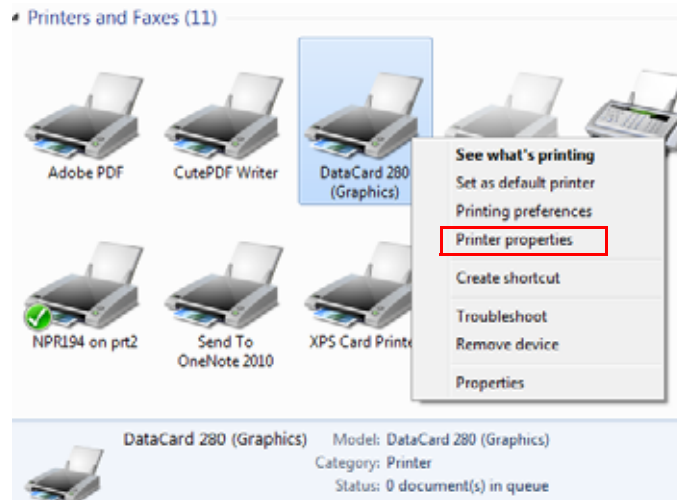
The default COM port speed is 9600 baud. Setting the port speed to 57600 baud allows for improved performance.

- d. Save the .ini file.

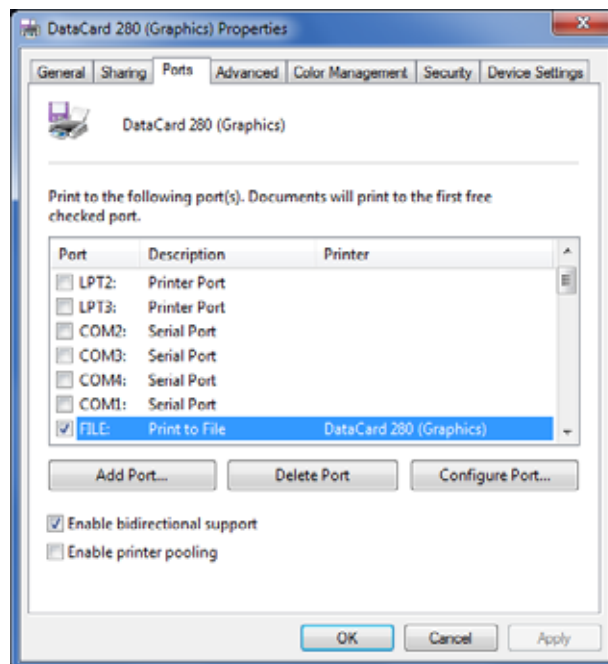
## Free the Serial Communication Port for ID Works Printing

Do the following to remove the lock from the serial port, allowing ID Works applications to communicate with the 280P system.

1. Open the Devices and Printers window.
2. Right-click the Datacard 280 printer icon and select **Printer properties**.



3. Click the **Ports** tab on the Properties dialog box and select **FILE**. Click **Apply**.



4. Click **OK** to close the Properties dialog box.

The serial COM port now is available for use with the ID Works application.

## Reassign the Serial Communication Port to the Printer Driver

Before using a non-ID Works application with the 280 system, you must redirect the printer driver to the correct serial COM port. Use the procedure in [“Free the Serial Communication Port for ID Works Printing”](#) on [page 19](#) to change the COM port.

## I Get “Limits Exceeded” Errors When Printing Cards in ID Works Production

This error indicates that a text or graphics field extends too far to the right. Adjust your card design so that:

- The maximum number of characters in the text field does not extend too far to the right.
- **280P System with UltraGrafix option only:** All graphics (static graphics, variable graphics, and photos) are at least 0.2 inch (5 mm) from the right edge of the card.

Alternatively, ask your Datacard Service Representative to change the configuration of your 280P system so that Check Card Limits Error is set to OFF. If you disable card limits checking, we recommend that you use text field masking to make sure that instances of too much data are caught during input.

