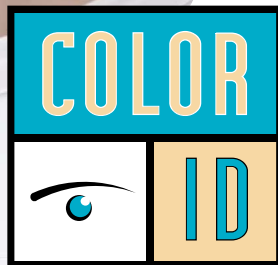


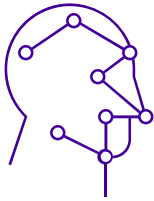


Lorem ipsum dolor sit amet, consectetur adipiscing elit, sed diam nonummy nibh euismod tincidunt ut laoreet dolore magna aliquam erat volutpat. Ut wisi enim ad minim veniam, quis nostrud exerci tation ullamcorper suscipit lobortis nisl ut aliquip ex ea commodo consequat. Duis autem vel eum iriure dolor in hendrerit in vulgatu velit esse molestie consequat, vel illum dolore eu feugiat nulla facilisis at vero eros et accipit et iusto odio dignissim qui blandit praesent lacinia sapien

# VISIONPASS SP

Advanced facial recognition access control device





When it comes to access control, organizations are looking for airtight security solutions that provide a streamlined user experience for a high volume of users. IDEMIA's facial recognition technology offers advanced speed and accuracy performance and requires minimum behavioral adaptation from the user.

**VisionPass SP**—the latest addition to IDEMIA's biometric access control family—offers **frictionless user identification** for access control. With all the **essential** features and capabilities of the field-proven VisionPass, the **sleek** and **compact SP** version provides accurate and fair matching results **in less than one second**, for all users, in any lighting.



### #1 Biometric technology

- > Patented optical set with visible, infrared and 3D face acquisition
- > Fast, accurate and fair matching results with top-tier NIST FRVT evaluations
- > Superior 3D fraud detection capability certified by an independent testing body



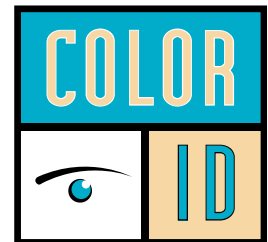
### Facilitate mobility

- > Compact for any door installation
- > Embedded RFID reader
- > Seamless integration with all PAC Software and MorphoManager
- > Power supply by PoE+ to door



### Eco-friendly

- > Eco-design to minimize carbon footprint
- > Automatic deep-sleep mode for ultra-low power consumption



PH: 888.682.6567  
WWW.COLORID.COM



## IDEMIA, #1 in biometric technology

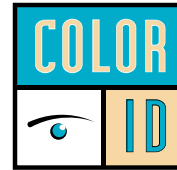
With over 40 years' experience and over 5 million biometric devices deployed worldwide, IDEMIA is the undisputed leader in biometric technology. Our algorithms—often called the most accurate, fair and consistent on the market and ranked in the top-tier in NIST FRVT evaluations—combined with our product design and manufacturing expertise make us the partner of choice.

VisionPass is already helping secure thousands of organizations, assets and people around the world.

In the banking sector, VisionPass modernizes and speeds up the access-control process for hundreds of thousands employees. It offers a fast, pleasant and non-intrusive clearance process, resulting in a smooth and comfortable user experience.

In data centers, VisionPass secures sensitive data by preventing fraudulent access of non-authorized users. VisionPass is being used for its unparalleled ease of use and biometric performance.

## Embedding best-in-class technologies



PH: 888.682.6567  
WWW.COLORID.COM

### Increased security of your access control system

- > Use capacity: processes up to 10,000 users **(Figure 1)**
- > Multi-factor authentication capability with built-in RFID, QR code reading and PIN code verification **(Figure 2)**
- > Adjustable capture area to confirm the intention of users who are trying to gain access
- > Embedded anti-spoofing capability certified by an independent testing body **(Figure 3)**
- > Secure communication with the company network and door controller via OSDP



Figure 1

### Easy deployment at access-control point

- > Compatible with a variety of locations thanks to the robust and reliable design (IP65/IK07) **(Figure 4)**
- > PoE+ power supply, no need for external power supply
- > Embedded relays for single door access control
- > Embedded white additional LED for low light environment **(Figure 5)**
- > Saves up to 75% power consumption in deep-sleep mode **(Figure 6)**



Figure 2

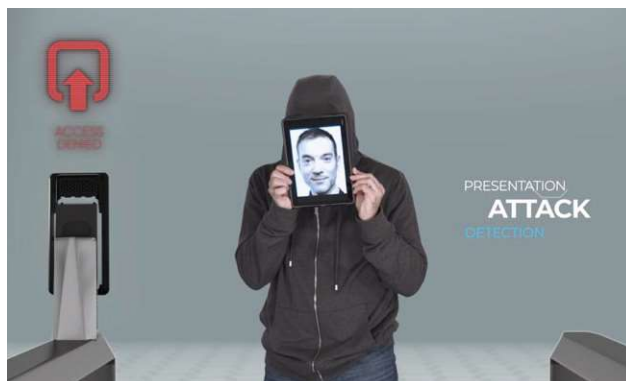


Figure 3

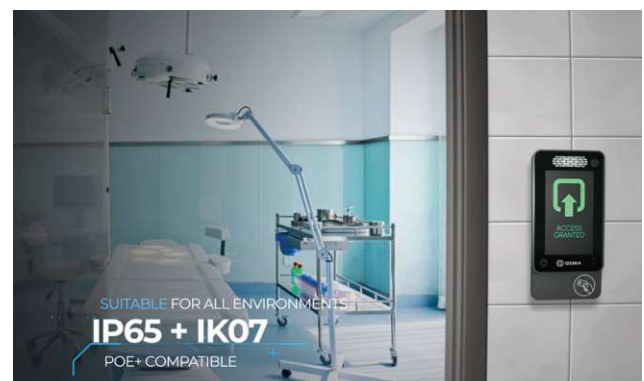


Figure 4

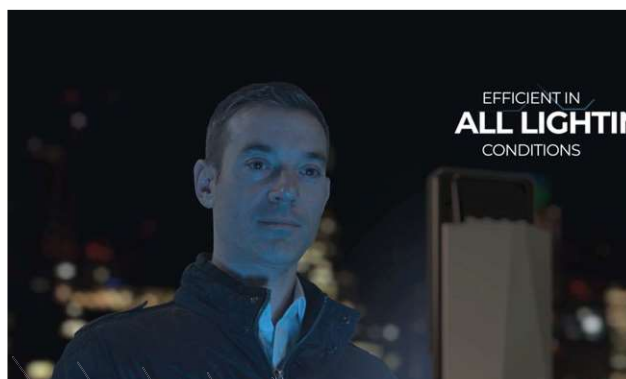


Figure 5



Figure 6



PH: 888.682.6567  
WWW.COLORID.COM

## True convenience with seamless adoption

- > Free-flow user journey without interaction with the device
- > Fully adaptable to face changes (**Figure 7**)
- > Wide angle detection adaptable to heights of 1.20 to 2.00 m (**Figure 8**)
- > User guidance with live feedback (5" touch screen) (**Figure 9**)



Figure 7



Figure 8

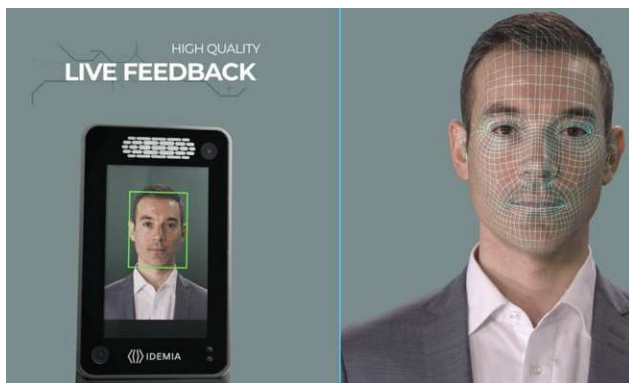


Figure 9

## Go live quickly

- > Plug and play with most industry providers of physical access control solutions
- > Easy configuration, group-based settings, centralized management, and detailed reporting with MorphoManager software
- > Compatible with sites already equipped with the VisionPass technology
- > Accepts external digital photo to simplify the enrollment process



## User privacy by Design - compliant with GDPR

- > **No local storage** of users' images **at any time**—only abstract structure of the face template (sequences of ones and zeros)
- > **Irreversible face template**—cannot be turned back into the original image
- > Face templates are securely managed **in the device**, and protected by AES 256 encryption, or **can be kept by each user on their secure RFID card**

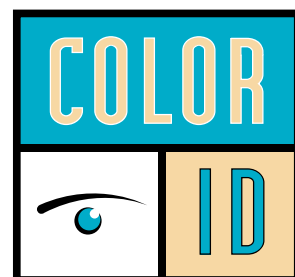


## Security by Design and by Default

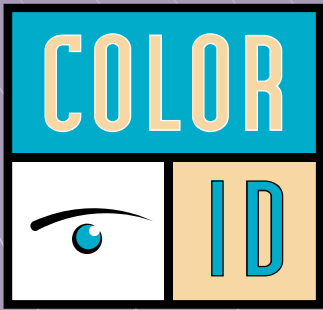
- > **Secure DevOps** and **Pentested**
- > **Secure booting** and **authenticity checks**
- > Crypto chip to **secure sensitive data**
- > **Safe communications** with eco-system
- > **Trigger alarms** in case of tampering
- > **Full description** in the General Security notice

## Full technical specifications

- › **CPU:** Multi-Core 1.8GHz + NPU
- › **5" WVGA color capacitive touchscreen**
- › **Face acquisition:** 2 x 2 MP visible/IR, 3D stereovision
- › **Illumination:** white and infrared LEDs
- › **Proximity sensor:** 60GHz radar sensor
- › **Sound:** buzzer
- › **Face performances**
  - Intention area 0.3 to 1.0 m (adjustable)
  - Field of view (H x V): 55° x 90°
  - User height from 1.2 to 2.0 m
  - Matching speed < 1s
  - Flow rate: 30 users per minute
  - Active Presentation Attack Detection
  - Compatible with masks
- › **Contactless reader options:**
  - MIFARE/DESFire, HID iClass, SEOS
  - Natively supports PIN codes
  - QR code scanning capability
- › **Internal storage capacity:**
  - Flash 16Gb and RAM 4Gb
  - Up to 10,000 users in the database
  - 250,000 IDs in authorized user list
  - 1 million transaction logs
- › **Security**
  - Secure booting and authenticity check
  - Cryptographic technologies to secure sensitive data
  - Data protection with AES-256 database encryption
  - Network communication encryption with TLS 1.2
  - Network authentication with 802.1X
  - OSDP secure channel
  - Tamper switches
- › **Network/communication:**
  - Ethernet, RS485
- › **Inputs/outputs:**
  - Wiegand in and out, OSDP, door relay, three GPI (including door monitoring), three GPO
- › **Power supply:**
  - 12 to 24 V DC (2,5A min @12V)
  - Power over ethernet with PoE+ switches
- › **Accessories:**
  - Available on request
- › **Operating conditions:**
  - Temperature: -10°C to 45°C (14°F to 113°F)
  - Humidity: 10%>80% (noncondensing)
- › **Ingress protection:** IP65
- › **HxWxD:** 21 x 10.2 x 3.5cm 8.2" x 4" x 1.4"
- › **Weight:** 0.8kg
- › **EMC/Safety standards:** CE, CB, FCC
- › **RoHS, REACH, California Proposition 65 and WEEE compliant**
- › **Environmental product declaration**
  - available on request
- › **Made in France**



PH: 888.682.6567  
WWW.COLORID.COM



PH: 888.682.6567  
WWW.COLORID.COM

# Unlock the world, make it safer